

#8940 Store at -20°C

# Alexa Fluor® 647 Phalloidin



✓ 300 assays

**Orders** ■ 877-616-CELL (2355)  
orders@cellsignal.com  
**Support** ■ 877-678-TECH (8324)  
info@cellsignal.com  
**Web** ■ www.cellsignal.com

rev. 04/02/18

**For Research Use Only. Not For Use In Diagnostic Procedures.**

**Applications**  
IF-IC, IF-F

**Species Cross-Reactivity**  
All

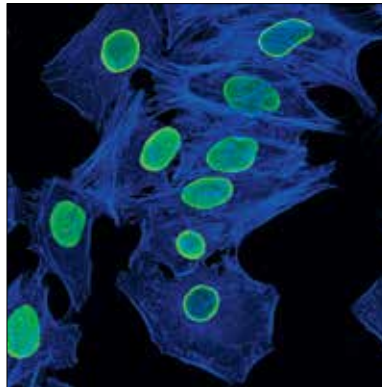
**Description:** Alexa Fluor® 647 Phalloidin allows researchers to fluorescently stain the cytoskeleton through the binding of phalloidin to F-actin. This product is intended for use on fixed and permeabilized samples due to the toxicity associated with phalloidin. After reconstitution the stock solution provides enough material to perform 300 assays based on a 1:20 dilution and a 100 µl assay volume.

Alexa Fluor® 647 Fluorescent Properties: Excitation: 650, Emission: 668.

**Background:** Actin, a ubiquitous eukaryotic protein, is the major component of the cytoskeleton. At least six isoforms are known in mammals. Nonmuscle β- and γ-actin, also known as cytoplasmic actin, are predominantly expressed in nonmuscle cells, controlling cell structure and motility (1). Actin exists mainly as a fibrous polymer, F-actin. In response to cytoskeletal reorganizing signals during processes such as cytokinesis, endocytosis, or stress, cofilin promotes fragmentation and depolymerization of F-actin, resulting in an increase in the monomeric globular form, G-actin (2). Phalloidin is a naturally occurring toxic bicyclic peptide found in the deathcap toadstool, Amanita phalloides, that rapidly binds to F-actin with strong affinity (3).

**Background References:**

- (1) Herman, I.M. (1993) *Curr Opin Cell Biol* 5, 48-55.
- (2) Condeelis, J. (2001) *Trends Cell Biol* 11, 288-93.
- (3) Lengsfeld, A.M. et al. (1974) *Proc Natl Acad Sci USA* 71, 2803-7.



Confocal immunofluorescent analysis of HeLa cells using Lamin A/C (4C11) Mouse mAb (Alexa Fluor® 488 Conjugate) #8617 (green). Actin filaments were labeled with Alexa Fluor® 647 Phalloidin (blue pseudocolor).

**Storage:** This material is provided as lyophilized solid that is stable for 1 year at -20°C, desiccated and protected from light. Stock solutions are stable for 1 year at -20°C, desiccated and protected from light. Phalloidin conjugates should be reconstituted in pure methanol to make stock solutions, please refer to the directions for use for details. Once reconstituted in pure methanol, stock solutions are stable for 1 year at -20°C, desiccated and protected from light. Stability in aqueous solutions is low and the conjugate should only be in the presence of an aqueous solution during incubation with cells.

**Directions for Use:** To make a stock concentration of 6.6 µM (20X), reconstitute the lyophilized material in 1.5 ml pure methanol.

Fix cells for 15 minutes using fresh, methanol-free 4% formaldehyde, then rinse three times in PBS for 5 minutes each. Once fixed, please follow CST protocol for immunostaining. Following incubation of the primary and secondary antibodies, Alexa Fluor® 647 Phalloidin can be diluted 1:20 (5 µl per 100 µl assay volume) in PBS and added to cells. Allow to incubate for 15 minutes at room temperature, then rinse once with PBS. Coverslip slides with ProLong® Gold antifade reagent and examine specimen using appropriate excitation wavelength.

Alexa Fluor® is a registered trademark of Molecular Probes, Inc.

© 2013 Cell Signaling Technology, Inc. Cell Signaling Technology® is a trademark of Cell Signaling Technology, Inc.

**Applications Key:** W—Western IP—Immunoprecipitation IHC—Immunohistochemistry ChIP—Chromatin Immunoprecipitation IF—Immunofluorescence F—Flow cytometry E-P—ELISA-Peptide  
**Species Cross-Reactivity Key:** H—human M—mouse R—rat Hm—hamster Mk—monkey Mi—mink C—chicken Dm—D. melanogaster X—Xenopus Z—zebrafish B—bovine  
Dg—dog Pg—pig Sc—S. cerevisiae Ce—C. elegans Hr—horse All—all species expected Species enclosed in parentheses are predicted to react based on 100% homology.